

**TREVIRA**

Composition : 100% POLYESTER TREVIRA CS  
 Weight : 340 g/m<sup>2</sup>  
 Light fastness : Scale 6 (blue scale) Xenotest  
 Abrasion resistance : 100.000 (rubs) Martindale  
 Cleaning Washing :



Fire resistance:

C1	CRIB5	BS 7176 MH	M1	NF D 60013 (AM 18)	B1	EN 1021/1-2	IMO A 652 (16)
----	-------	------------	----	--------------------	----	-------------	----------------



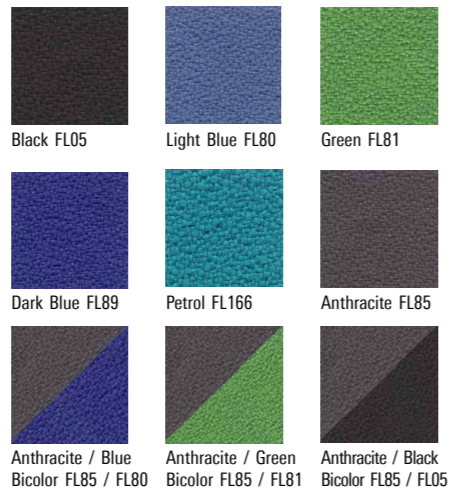
**FLEX**

Composition : 100% POLYESTER TREVIRA CS  
 Weight : 300 g/m<sup>2</sup>  
 Light fastness : Scale 6 (blue scale) Xenotest  
 Abrasion resistance : 100.000 (rubs) Martindale  
 Cleaning Washing :



Fire resistance:

C1	CRIB5	BS 7176 MH	M1	NF D 60013 (AM 18)	B1	EN 1021/1-2	IMO A 652 (16)
----	-------	------------	----	--------------------	----	-------------	----------------



**TREVIRA BLEND**

Composition : 100% POLYESTER TREVIRA CS  
 Weight : 420 g/m<sup>2</sup>  
 Light fastness : Scale 6 (blue scale xenotest)  
 Abrasion resistance : 100.000 (rubs) Martindale  
 Cleaning Washing :



Fire resistance:

C1	CRIB5	M1	B1	EN 1021/1-2	BS 7176 MH	NF D 60013 (AM18)	IMO A 652 (16)
----	-------	----	----	-------------	------------	-------------------	----------------



INDUSTRY OFFICE MEDICAL DENTAL  
**UPHOLSTERY**

**STAMSKIN**

Composition : Stamskin TOP F 4340, backing Polyamide-jersey, coating antimicrobial and anti-fungal treatment  
 Weight : 780 g/m<sup>2</sup>  
 Light fastness : Scale 7  
 Abrasion resistance : >120.000 rubs Martindale  
 Advantages : Urine-, blood-, sweat-, fungal and waterproof, manufactured to environmentally friendly standards ISO 14001  
 Cleaning : With brush, water and soap, rinse of with water, do not clean with stain-removers containing solvents or oily products  
 N°528/2012/CE-Folpet : Stamskin Top contains the biocidal product Folpet, an antifungal additive used to help maintaining appearance, physical properties and prolong the service life of these articles

Flame retardant:

UK: BS 5852	D: DIN 53438/T2	F: NFP 92.507
-------------	-----------------	---------------



**PUxx**

Composition : PUxx no. 1, 100% Polyurethane, backing polyester cotton mixture, free from Phthalate and PVC.  
 Weight : ± 520 g/m<sup>2</sup>  
 Abrasion resistance : > 300.000 Martindale  
 Light fastness : 6-7 (8 is excellent)  
 Cleaning : PUxx no. 1 is easy to clean and disinfect. It is resistant to most cleaning agents and disinfectants (based on alcohol, chlorine and ammonia). Do not use solvents.  
 Advantages : PUxx nr. 1 is free of Phthalate and PVC and OEKO-TEX certified. 100% waterproof. Urine and blood resistant. Extremely scratch resistant surface. Easily transport for heat (no sweat feeling).

Flame retardant:

GB BS 5852 Crib 5	EN 1021 1-2	CALL117-2013	IMO 2010 FTP: part 8	D DIN 4102 B1 (available on request only)
-------------------	-------------	--------------	----------------------	---



**LEATHERETTE**

Composition : Backing Cotton Jersey, coating fire retardant plasticised PVC  
 Weight : 590 g/m<sup>2</sup>  
 Light fastness : ISO105 >6  
 Cleaning : Clean material with humid cloth and householdsoap. Do not use cleaning-materials that contain solvents.

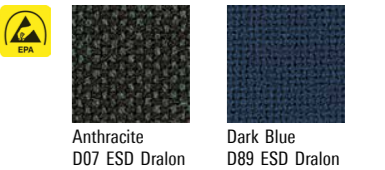
Flame retardant :

FMVSS 302 (= 95/28/EG IV, R118)	b, EN1021 1+2
---------------------------------	---------------



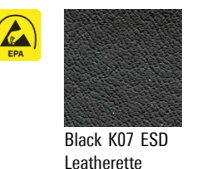
**ESD DRALON**

Composition : Dralon-Bekinox  
 Weight : 560 g/m<sup>2</sup>  
 Colour fastness : Scale 5-8  
 Abrasion resistance : 50.000 rubs Martindale  
 Cleaning : With a damp cloth, do not use bleach



**ESD LEATHERETTE**

Composition : PVC Compound/CO/RES  
 Weight : 630 g/m<sup>2</sup>, ± 50 g/m<sup>2</sup> knitted fabric  
 Colour fastness : Scale 6-8  
 Cleaning : With a damp cloth, do not use bleach



Stamskin



**K189**  
Capri Blue



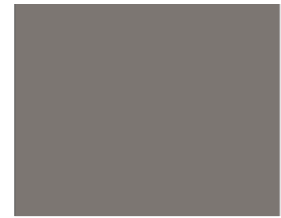
**K05**  
Black



**K85**  
Anthracite



**K89**  
Dark Blue



**K295**  
Mouse Grey



**K170**  
Burgundy Red



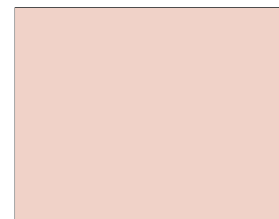
**K190**  
Ochre Yellow



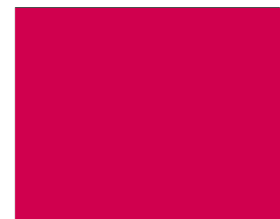
**K292**  
Forest Green



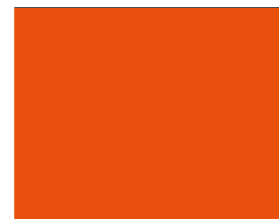
**K258**  
Taupe



**K294**  
Blush



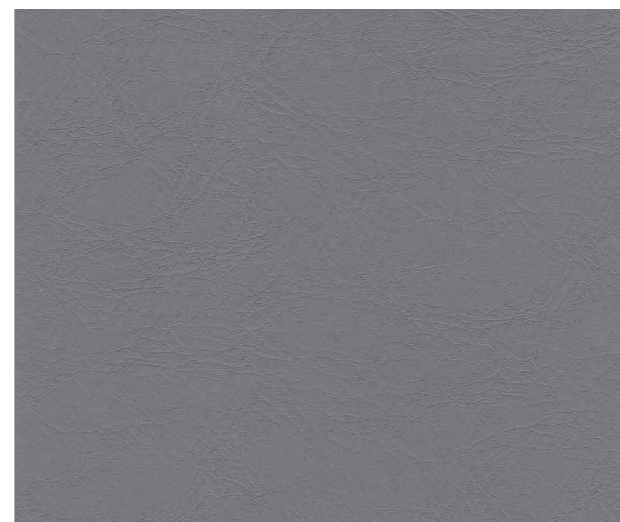
**K394**  
Pink Orchid



**K196**  
Dutch Orange

All Stamskin colours can be combined with each other to form bicolor colors

PUxx



**PU95**  
Grey

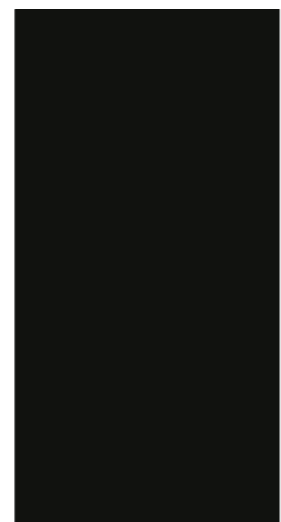


**PU89**  
Dark Blue



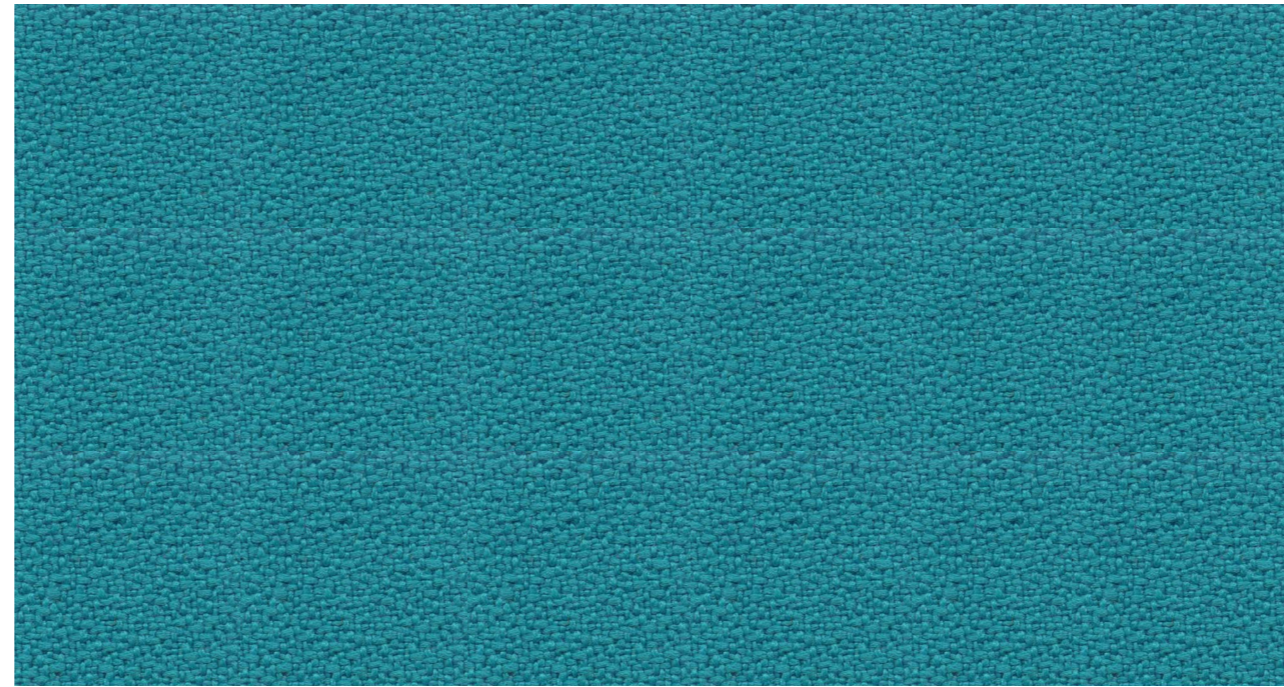
**PU05**  
Black

Leatherette



**K11**  
Black

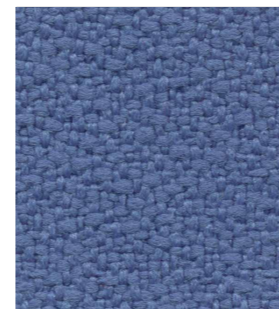
Flex



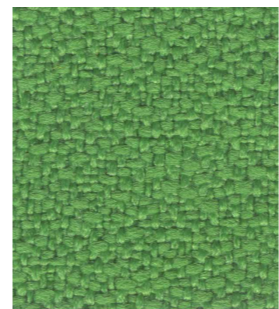
**FL166**  
Petrol



**FL05**  
Black



**FL80**  
Light Blue



**FL81**  
Green



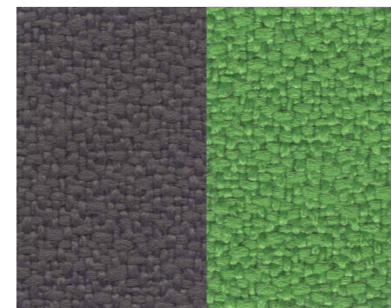
**FL85**  
Anthracite



**FL89**  
Dark Blue



**FL85/FL80**  
Bicolor Anthracite/Blue

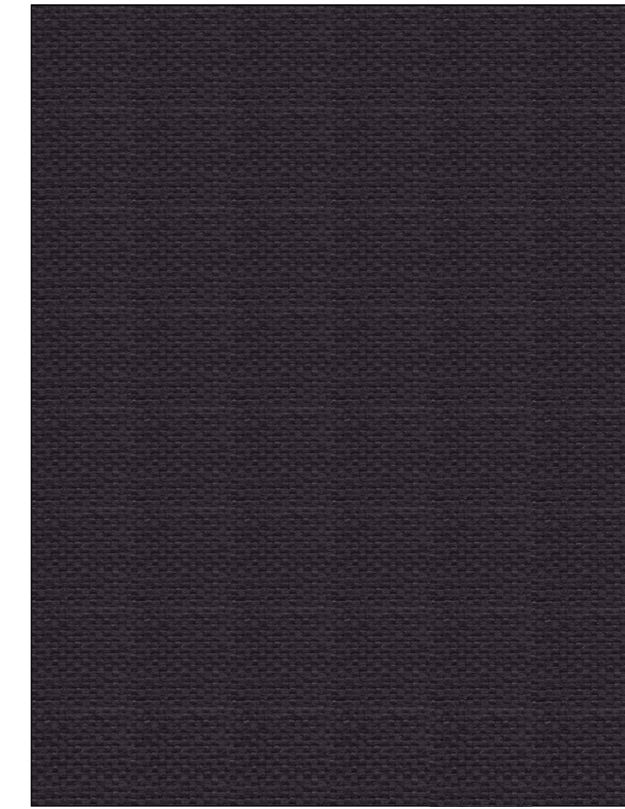


**FL85/FL81**  
Bicolor Anthracite/Green



**FL85/FL05**  
Bicolor Anthracite/Black

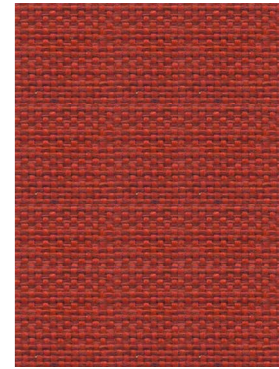
Blend



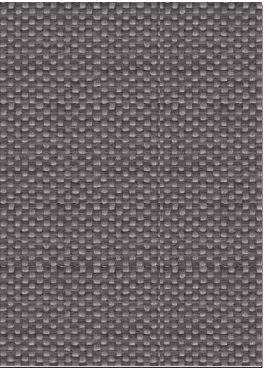
**BL05**  
Black



**BL77**  
White



**BL87**  
Red

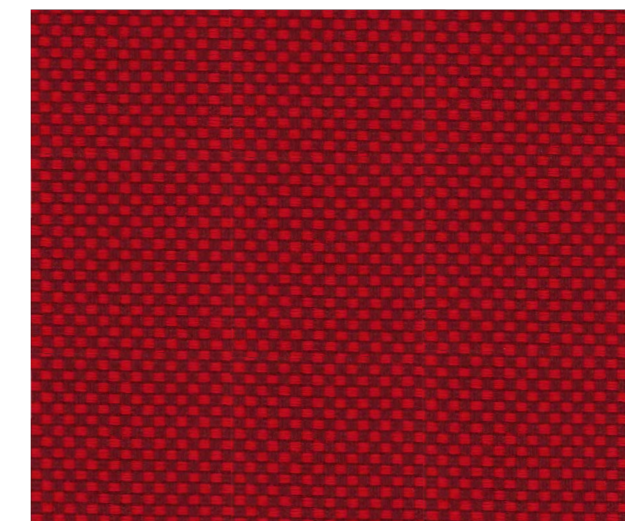


**BL95**  
Grey



**BL89**  
Blue

Trevira



**D17**  
Red



**D04**  
Grey



**D81**  
Blue Black



**D05**  
Anthracite

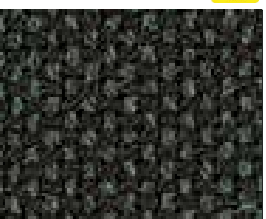


**D87**  
Blue



**D09**  
Black

ESD



**D07 ESD**  
Anthracite Dralon



**D89 ESD**  
Dark Blue Dralon



**K07 ESD**  
Black Leatherette